



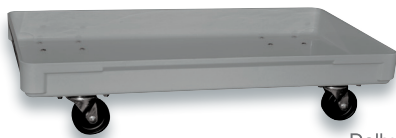
- Dimensionally stable and exceptional structural strength
- Drop ends and/or sides increases air circulation and faster cooling for the larva
- Conforms to FDA Regulation Title 21 CFR 177.2420
- Interlock stacking increases drying room efficiency
- Temperature range continuous -60° to 250° F (-51° to 121° C)
- Won't bend, dent or deflect under heavy loads
- Smooth, non-porous surface is easy to steam clean or power wash
- Heavy-duty dolly available

## MFG Insect Rearing Trays

*Insect rearing facilities all over the world have used our durable and dependable trays for over 40 years!*

Model No.	Description	Top Outside Dimensions (L x W x H)					
		inches	mm	inches	mm	inches	mm
705108	Nest & Stack Pupae Box	21 7/8	537	15 5/8	397	6	152
805208	Stacking Larva Box with drop sides	30 3/8	772	15 7/8	403	2 7/8	73
805308	Stacking Larva Box with drop sides	30 3/8	772	15 7/8	403	4 1/8	105
805408	Stacking Larva Box with drop ends and sides	30 3/8	772	15 7/8	403	3 5/8	92
805508	Stacking Larva Box with drop ends and sides	30 3/8	772	15 7/8	403	2 7/8	73
805148	Heavy-duty dolly for 805208, 805308, 805408 & 805508	30 3/8	772	15 7/8	403	2 7/8	105
841148	Stacking Box Vermiculite	37 3/8	953	24 1/4	616	19	483

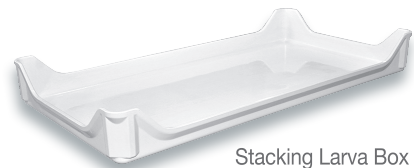
For additional information on these or the many other MFG Tray products, please contact the Sales Department.



Dolly  
Model No. 805148



Stacking Larva Box  
Model No. 805208 and 805308



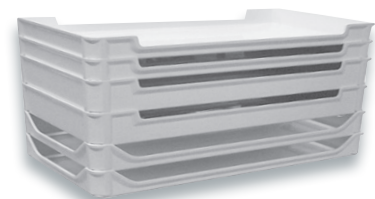
Stacking Larva Box  
Model No. 805408



Stacking Box  
Model No. 841148



Nest & Stack  
Pupae Box  
Model No. 705108



Stacking Larva Boxes  
Model No. 805208, 805308 and 805508